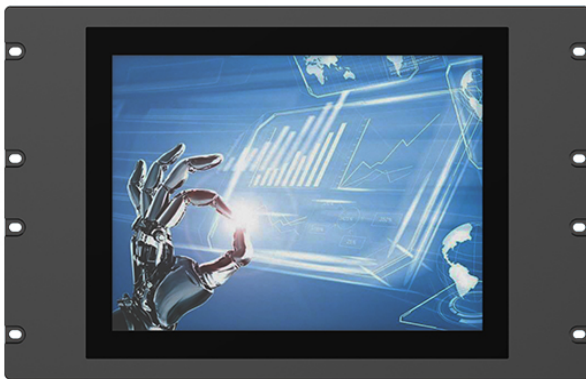


# TM-RC150 15.0" Rack mount Pcap. industrial Monitor

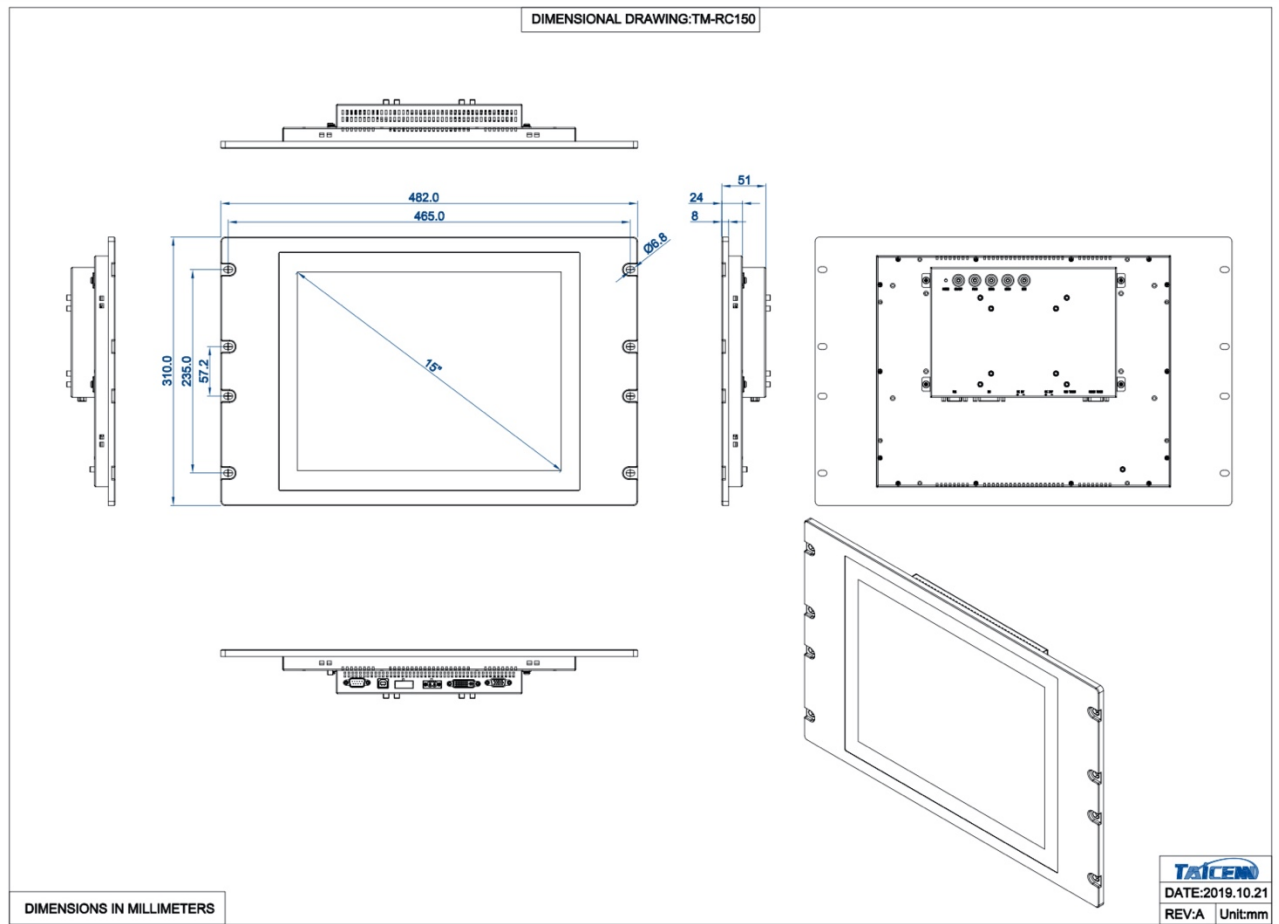


## ● Specification

Basic	
Front panel	Magnesium-Aluminum alloy, anodized treatment
Rear panel	SGCC plate sheet, sand-blasting
Control button	OSD button on rear panel
Signal input	1*VGA, 1*DVI
Mount method	Standard 19.0 rack mount, support VESA 75/100
Overall dimension	482.0 * 310.0 * 51 (mm)
Net weight	3.5KG
IP rating	Front Panel IP65
LCD display	
Size & Type	15.0" TFT LCD
Resolution	1024 * 768
Backlit & MTBF	LED backlit & 50 000 hours
Brightness	350 nits
Display area	304.128 * 228.096
View angle	80/80/80/80
Touch	
Type	Projective capacitive touchscreen (Pcap.)
Touch interface	USB (Optional with RS232)
Touch points	Multi-points, max. up to 10 points
Durability	>100 000 000 times
Surface hardness	Mohs 6H
Special treatment	Anti-fingerprint (AF)
Power & environmental	
Voltage input	DC 12V (Optional with DC 9~36V)
Operating temp.	-20 ~ + 70 °C
Storage temp.	-30 ~ + 80 °C
Relative humidity	10 ~ 95% @ 10C (No condensation)
Vibration	50 ~ 500 Hz, 1.5G, 0.15mm peak to peak
Shock	10G/Peak (11ms)

Power consumption	Around 20W
EMC	CE/FCC Class A

## ● Dimension



## ● Ordering information

TM-RC150	15.0" LCD, 1024*768, Pcap. touch, USB interface, 1*VGA, 1*DVI, DC 12v, 40W power adapter
TM-RC150W	15.0" LCD, 1024*768, Pcap. touch, USB, 1*VGA, 1*DVI, DC 9~36v, default no power adapter
TM-RG150	15.0" LCD, 1024*768, Tempered glass (no touch), 1*VGA, 1*DVI, DC 12v, 40W power adapter
TM-RG150W	15.0" LCD, 1024*768, Tempered glass (no touch), 1*VGA, 1*DVI, DC 9~36v, default no power adapter
TM-RC150S	15.0" LCD, 1024*768, Pcap. touch, RS232 interface, 1*VGA, 1*DVI, DC 12v, 40W power adapter
TA-DVI2HDMI	HDMI to DVI convert cable, 1.8m length
TA-PSU02	40W power adapter (Optional to order when wide voltage input)